

New!

CHIRALPAK® QD-AX
CHIRALPAK® QN-AX

Laboratory Products

*We proudly introduce
two new chiral columns to our
expanding line of unique chiral
chromatography products.*

*The CHIRALPAK QD-AX and
CHIRALPAK QN-AX are designed
specifically for the enantioselective
resolution of chiral acids by
HPLC and SFC.*

Invented and developed by Professor Wolfgang Lindner of
the University of Vienna

Chiral selectors are based on complementary quinine (QN)
and quinidine (QD) derivatives

Exhibits excellent separation capabilities for chiral acids in
reversed-phase and with polar organic solvents

Offers complementary performance to our well established
CHIRALPAK® and CHIRALCEL® polysaccharide columns



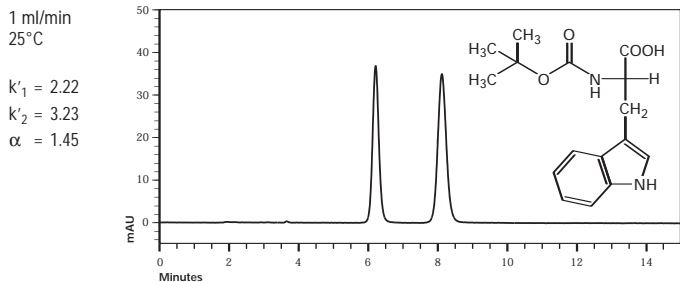
CHIRAL
TECHNOLOGIES INC

CHIRAL TECHNOLOGIES INC., West Chester, PA USA
1-800-6CHIRAL TEL 610-594-2325 FAX
www.chiraltech.com



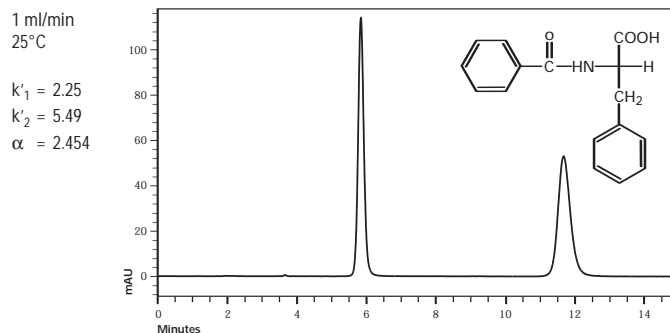
Boc-Tryptophan

CHIRALPAK® QN-AX 4.6 x 150 mm
98:2:0.5 MeOH/HOAc/NH₄OAc



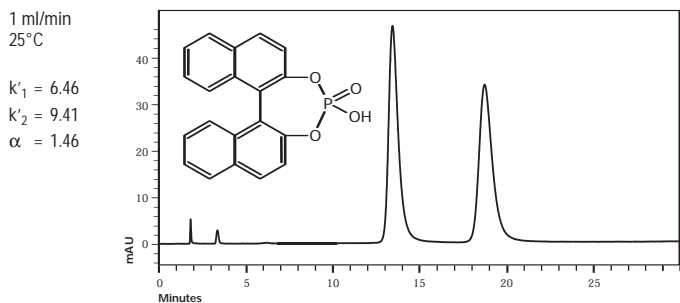
N-Benzoyl-Phenylalanine

CHIRALPAK® QD-AX 4.6 x 150 mm
98:2:0.5 MeOH/HOAc/NH₄OAc



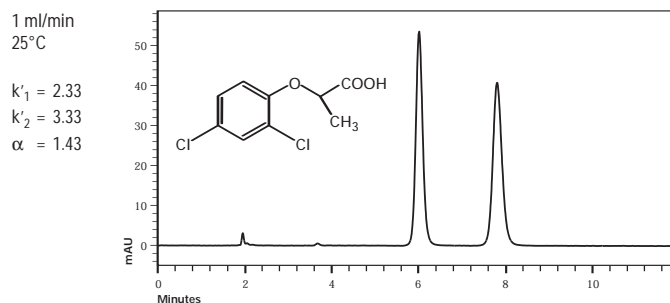
1,1'-Binaphthyl-2,2'-diyl hydrogenphosphate

CHIRALPAK® QN-AX 4.6 x 150 mm
98:2:0.5 MeOH/HOAc/NH₄OAc



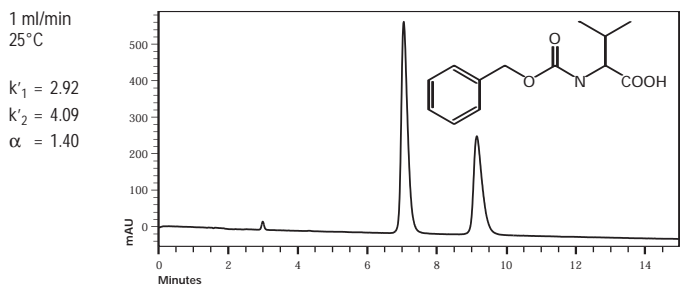
Dichloroprop

CHIRALPAK® QD-AX 4.6 x 150 mm
98:2:0.5 MeOH/HOAc/NH₄OAc



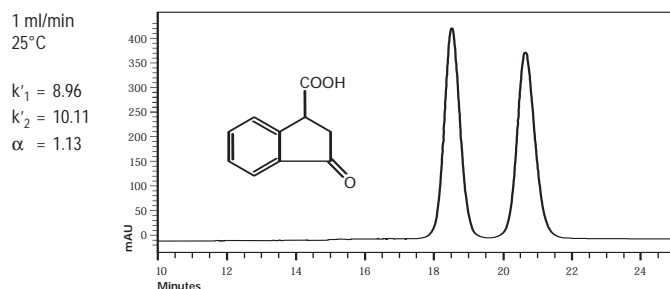
N-CBZ-Valine

CHIRALPAK® QD-AX 4.6 x 150 mm
60:40 Acetonitrile/pH=6 Aq Phosphate 20 mM



3-oxo-1-Indancarboxylic acid

CHIRALPAK® QN-AX 4.6 x 150 mm
80:20 Methanol/0.2 M acetic acid pH=6.0



PART NUMBER	PRODUCT NAME	INTERNAL DIAMETER (mm)	COLUMN LENGTH (mm)	PARTICLE SIZE (μ)	PRODUCT TYPE
31311	CHIRALPAK QD-AX	4.0	10	5	Guard Cartridges
31394	CHIRALPAK QD-AX	2.1	150	5	Analytical
31324	CHIRALPAK QD-AX	4.6	150	5	Analytical
31344	CHIRALPAK QD-AX	20	150	5	Semi-Prep
32311	CHIRALPAK QN-AX	4.0	10	5	Guard Cartridges
32394	CHIRALPAK QN-AX	2.1	150	5	Analytical
32324	CHIRALPAK QN-AX	4.6	150	5	Analytical
32344	CHIRALPAK QN-AX	20	150	5	Semi-Prep



CHIRAL
TECHNOLOGIES INC

CHIRAL TECHNOLOGIES INC.
West Chester, PA USA

1-800-6CHIRAL TEL
610-594-2325 FAX

www.chiraltech.com